

## PROOF OF THE SLC DIFFERENCE

The School Leadership Center is dedicated to developing Louisiana's public and non-public school leaders, and optimizing teaching and learning in the school environment in order to increase student achievement.

**Through programs and research, we help a participating school's principal and leadership team zero in on learning within a grade level and classroom. This helps align curriculum and provides intervention to improve student performance.**

The Fellows Program and the Discovery Walks Program are utilized to aid participating schools in reaching increased student achievement and give schools the tools they need to be catalysts for improved educational outcomes for children in southeast Louisiana. Comparative data analysis shows that schools enrolled in these programs make greater progress in improving their Louisiana Department of Education School Performance Scores.



Parish/Schools	Year	2010 State Minimum	Starting SPS Score	2010 Current Score
	Fellow	SPS	SPS	SPS
<b>Jefferson Parish</b>				
Greenlawn Terrace	2004	60	91	110.6
Hart	2004	60	62.6	85.2
Hazel Park	2003	60	87.6	105.2
J.C. Ellis	2003	60	89.5	105.6
Schneckenburger	2004	60	92.9	100.1
Woodland West	2004	60	62.5	90.1
<b>Orleans Parish</b>				
A.P. Tureaud	2006	60	29.1	77.1
Behrman	2006	60	54.5	101.2
Eisenhower	2006	60	72.6	85.4
Wright	2004	60	37.6	81.7
<b>Plaquemines Parish</b>				
Belle Chasse Primary	2006	60	115.4	121.9
Boothville-Venice	2006	60	89.3	116.9
<b>St. James Parish</b>				
Gramercy Elementary	2006	60	73.3	93.8
<b>St. Tammany Parish</b>				
Lee Road	2005	60	100.7	110.3
Monteleone	2007	60	102.5	114
Whispering Forest	2006	60	99.7	122.3
<b>St. Bernard Parish</b>				
Trist	2003	60	89.2	98.8
W. Smith Jr.	2006	60	63.9	88

## THE FELLOWS PROGRAM



Since 1998, 235 Principals from schools in Orleans, Jefferson, St. Bernard, St. Tammany and Plaquemines Parishes have completed the Fellows program.

The Fellows, Summer Institute and SLC Learning Initiatives programs are progressively linked to help Principals, Assistant Principals and their School Leadership Teams build a collegial network of school leaders that creates an open, critical, and mutually supportive campus of learners for adults and children.

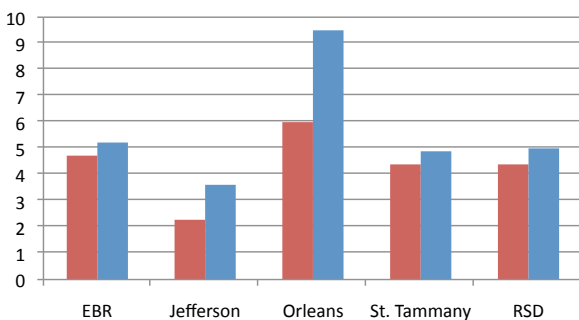
## DISCOVERY WALKS



Utilizing a three-year federal grant, SLC piloted a “Coaching Program” modeled after the “Learning Walk Method” developed by Tony Alvarado and

Elaine Fink in New York and San Diego. More than 140 first and second year principals utilized this program in their schools between 2006 and 2009. The success of the “coaching program”, whereby a school team recommends and implements professional development strategies to strengthen teaching and learning outcomes, has led to the establishment of the “Discovery Walks” program (see graph below). New principals outscored all the other principals in the districts consistently.

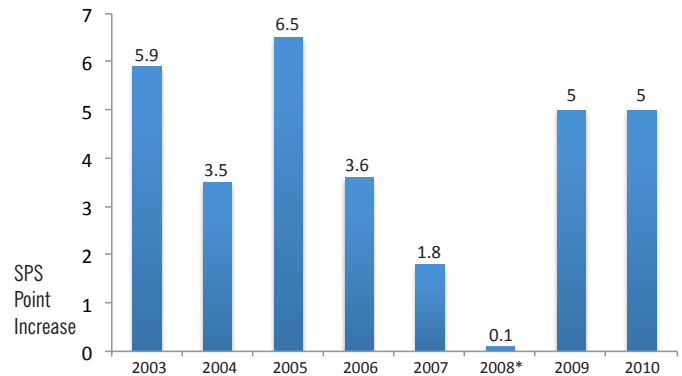
### 2008-2009 SPS Growth



SLC schools indicated in blue were first and second year principals in the coaching program as compared to all other principals in the district who did not participate in the coaching program indicated in red.

## School Performance Scores are a composite of scores comprised primarily of state high stakes testing and grade by grade assessments.

Growth averages in SPS Scores for 200 participating schools has been consistent, even after Katrina.



\*2008 is the year that schools that closed and were reorganized because of Hurricane Katrina re-entered the accountability system.

### The SLC Difference Under the Microscope

- All schools in the SLC programs improved their SPS scores by the time of completion of the 2 year program.
- The average increase of the more than 200 schools' SPS scores participating in SLC programs since 2003 is 3.9 points (see graph above), while the average for the state for the same time period is 2.7.
- 16 of the 18 schools featured in this flyer exceeded the state minimum SPS score of 60 by more than 25 points after joining SLC programs and improved their scores prior to admission to SLC programs by 28%.

Learn more about our programs and results at: [www.slc-gno.org](http://www.slc-gno.org)

Or contact us at: 504.267.7239

*\*Notice of Nondiscriminatory Policy. The School Leadership Center of Greater New Orleans admits school principals and leaders of public and non-public schools located in Louisiana of any race, color, national and ethnic origin to all of the rights privileges, programs and activities generally accorded and made available to program enrollees and organization members. It does not discriminate on the basis of race, color, national and ethnic origin in administration of its policies and programs.*